



KLS TECHNOLOGY GROUP

TECHNOLOGY GUIDE 2002

ELECTRIFY YOUR SENSES

KLS Electronics had its humble beginnings distributing DJ lighting equipment from Canada in 1983. Business increased and their popularity in the United States grew beyond the company's expectation, prompting the move to the "colonies." In 1990, KLS Electronics opened their main office in the USA.

Based in Livonia, Michigan, the KLS Technology Group began manufacturing their own lighting products in 1994. By then the company utilized 6,000 square feet of Research and Development, Assembly, Packaging,

Distribution, and Service areas. With a staff of trained technicians, service personnel, sales and marketing professionals, and hands-on leadership, KLS pioneered a complete line of DJ and Nightclub lighting systems. Over the years, KLS proved quality, reliable top-notch lighting products could be built in the United States.

That same quality and reliability is also reflected in the additional products from around the world that are distributed by KLS. Companies such as FAL (from Italy), Anytronics (from England), and Nova Truss (from Europe) are some of the oldest and most trusted names worldwide. KLS Technology Group is once again pioneering superior products from overseas. The newest member of the group is

Citronic Pro Audio a leader in England for DJ electronics for the past 28 years. DJ's that know the world market know the name Citronic and the quality it stands for. Citronic's new competitive pricing will soon make it a household name in the States.

With an eye towards the future, the KLS Technology Group is already working on an exciting new line of lighting products to be introduced later this year. Bookmark the website (www.kls-usa.com) so you can follow the development of the next generation of high quality, ultra dependable, innovative products at reasonable prices. 

MOVING HEADS	2-7
SPECIAL EFFECTS	8-9
D.J. SERIES	10-11
CENTERPIECES	12
FOLLOW SPOTS	13
PARCANS & PINSPOTS	14-16
STROBES	17
OUTDOOR LIGHTING	18
MISCELLANEOUS	19
CONTROL SYSTEMS	20-21
FOGGERS & HAZERS	22-23
NOVATRUSSE SYSTEMS	24
SUPPORT SYSTEMS	25

MOVING HEADS

MH 660

Now this is a head! 16 bit resolution for smooth movement, 6 interchangeable and indexable rotating gobos + open, 4 metal gobos, 1 multicolor dichroic gobo, 1 glass gobo, 11 colors + white, 3 facet prism, motorized focus, mechanical dimmer, additional shutter for super fast strobing, automatic pan/tilt position correction, LED display, lamp on/off via DMX, requires 16 channels of DMX control.



MH 660

Power Supply: 120/230V 50/60 Hz.
Power Consumption: 400W
Lamp: MSD/HSD 250
Weight: 32 lbs.
Dimensions: 14.5" x 16" x 17"



MH 640

Same powerful lamp as MH660, CMY color mixture, motorized color wheel with 6 dichroic filters, colors red, green and blue, 32K and 6000K correction filters, blacklight, UV, frost filter for softer beam, macro function for combination between CMY color mixture and color wheel, dimming, strobing, LED display, built in analyser; lamp on/off via DMX, 16 bit resolution.

MH 640

Power Supply: 120/230V 50/60Hz.
Power Consumption: 400W
Lamp: MSD250
Weight: 32 lbs.
Dimensions: 14.5" x 16" x 17"

MH 860

This is the ultimate machine! 2 color wheel systems, UV, frost and correction filters, 2 gobo wheels, 1 with 9 static exciting gobos, 1 with 6 rotating glass and metal gobos, motorized focus, iris, 3 step zoom, dimming, super fast strobe, gobo shake, super bright optics, 16 bit resolution, digital display, pan movement 530°, tilt 280°, automatic pan/tilt position correction.

MH 860

Power Supply: 120/230V 50/60Hz.
Power Consumption: 600W
Lamp: HSR/MSR 575
Weight: 52 lbs.
Dimensions: 18" x 13" x 12"



KLS TECHNOLOGY GROUP

MOVING HEADS

FAL 360/3

This high powered moving yoke projector utilizes an MSR575 lamp and a cold light ellipsoidal with anti-reflect lens for excellent projection. Features 9 dichroic colors + white, variable by directional wheel rotation, 7 interchangeable, indexable rotating gobos, shutter, strobe, dimming, blackout functions. Motorized focus, motorized iris, 2 variable speed rotation prisms, 4 & 5 facet, frost filter; UV, blacklight filter; head movement, pan 360°, tilt 270°. Controlled via DMX512, 10 channels (12 channel high resolution). Digital display.



FAL 360/3

Power Supply: 230V 50/60Hz.
Power Consumption: 800VA at 230V
Lamp: MSR/HSR 575
Weight: 55 lbs.
Dimensions: 16" x 19" x 24"



FAL 2000

Powered by a MSD/HSD 250 lamp, this unit has 9 dichroic colors, 2 color correction filters, frost, 4 rotating gobos, 3 fixed gobos + open, 1 - 3 facet prism, fast action shutter speed with full beam blackout and strobe. Controlled via 8 channel DMX512 or automatic mode which allows groups of 4 units to operate in sequence or with internal programs.

FAL 2000

Power Supply: 120/230V 50/60Hz.
Power Consumption: 900VA at 230V
Lamp: HSD 250W
Control: 8 channel DMX 512
Weight: 36 lbs.
Dimensions: 24.8" x 14.8" x 6.8"



SC 780

Powerful scanner, loaded with the latest technology. Uses an extremely bright HMI 575 lamp, 11 dichroic colors, 2 correction filters, 2 gobo wheels, 1 static with 8 multi-color glass gobos, 1 with 6 rotating gobos (glass and metal), UV, frost filter, 3 facet rotating prism, motorized iris, focus and zoom. Super bright strobing, 16 bit resolution for super smooth operation.

SC 780

Power Supply: 120/230V 50/60Hz.
Power Consumption: 850W
Lamp: HMI 575
Weight: 52 lbs.
Dimensions: 13" x 9" x 8"

MOVING HEADS



PROMO 3

Head rotation pan 360°, tilt 270°, 7 dichroic colors, 5 rotating gobos interchangeable, 1 fixed gobo interchangeable, one 3 facet prism, fast action strobe, continuous operation.

PROMO 3

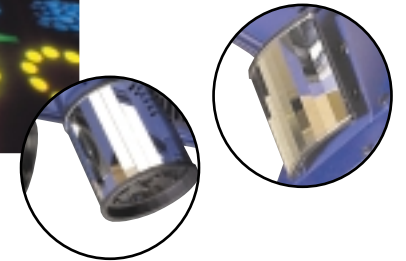
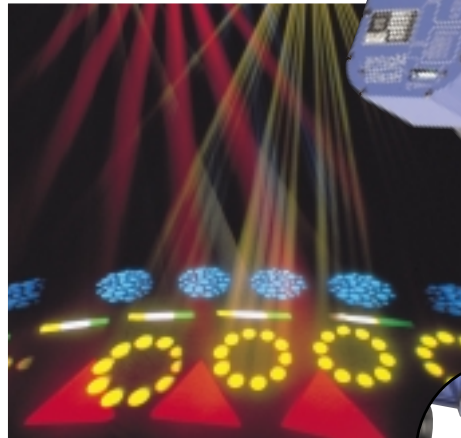
Power Supply: 120/230V 50/60Hz.
Power Consumption: 600VA at 230V
Lamp: MSD 250W
Control: Digital DMX 512 8/2 channels
Dimensions: 12.8" x 12.8" x 20"
Weight: 37 lbs.

FANDANGO 1, 2, 3

This is a very unique effect in 3 different styles with a very powerful 250W lamp. Programmable via DMX 512, simple lines of gobos and colors to a complete 360° rotation for the most spectacular effect, continuous operation, very affordable.

FANDANGO 1, 2, 3

Power Supply: 110/220V 50/60Hz.
Power Consumption: 300W
Lamp: ELC 24V 250W
Control: 4 channel DMX 512
Dimensions: 18.5" x 9.5" x 6"
Weight: 17 lbs.



MANTIS

8 gobos, 7 colors, sound activated DMX 512 control, lamp on & off via DMX, light weight, great show created by a multitude of colors & gobos, optional Easy Pro DMX 512 Controller, continuous operation.

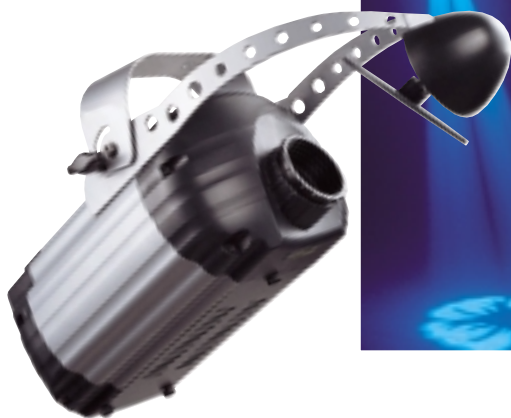
MANTIS

Power Supply: 120/220V 50/60Hz.
Power Consumption: 280W
Lamp: EHJ 24V 250W
Control: 3 channel DMX 512
Dimensions: 24" x 12" x 7"
Weight: 17 lbs.



KLS TECHNOLOGY GROUP

MOVING HEADS



CALYPSO

8 gobos, 7 colors, control via DMX 512 or sound activated, lamp on & off via DMX 512, light weight, lots of punch from such a small package, great for mobile DJ's or clubs, optional Easy Pro DMX 512 Controller; continuous operation.

CALYPSO

Power Supply: 120/220V 50/60Hz.
Power Consumption: 280W
Lamp: EHJ 24V 250W
Control: 3 channel DMX 512
Dimensions: 24" x 12" x 7"
Weight: 17 lbs.



SIGMA

8 gobos, 7 colors, control via DMX 512 or stand alone, super brite, constant moving gobos & patterns, a perfect effect for small clubs & DJ's, just plug & play, optional Easy Pro DMX 512 Controller; continuous operation.

SIGMA

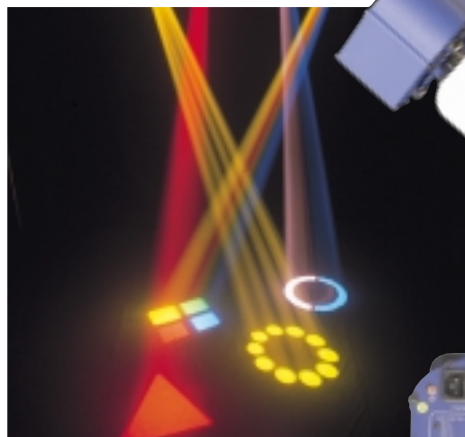
Power Supply: 120/220V 50/60Hz.
Power Consumption: 280W
Lamp: EHJ 24V 250W
Control: 3 channel DMX 512
Dimensions: 24" x 12" x 7"
Weight: 17 lbs.

TANGO 1

Great new scanner! Bright, easy to use and affordable! 16 brilliant colors/gobos combinations, precision stepper motors, improved optics, strobing, instant set up for audio or DMX 512 operation, can be used with any DMX 512 Controller; continuous operation.

TANGO 1

Power Supply: 110/220V 50/60Hz.
Power Consumption: 300W
Lamp: ELC 24V 250W
Control: 4 channel DMX 512
Dimensions: 18.5" x 9.5" x 6"
Weight: 17 lbs.
Colors/Gobos: 16 combinations



MOVING HEADS

POLARIS

The most superb lighting effect yet!
Powerful, dynamic, DMX 512 or sound activated, lamp on & off from DMX control, lightweight, optional Easy Pro DMX 512 Controller; continuous operation.

MANTIS

Power Supply: AC 120/220V 50/60Hz.
Power Consumption: 280W
Lamp: EHJ 24V 250W
Control: 3 channel DMX 512
Dimensions: 14" x 12" x 7"
Weight: 9 lbs.



QUASAR

Great Effect! 8 gobos, 7 colors, controlled via 3 channel DMX 512, lamp on & off from DMX, nice combination of gobos & colors, revolving light beams, lightweight, optional Easy Pro DMX 512 Controller; continuous operation.

QUASAR

Power Supply: AC 120/220V 60Hz.
Power Consumption: 280W
Lamp: ELC 24V 250W
Control: 3 channel DMX 512
Dimensions: 15.75" x 12" x 7"
Weight: 14 lbs.



F.A.L. 360 / 2

THE 360 / 2 Has fully featured moving head projectors, using an MSD 250 lamp for an extremely bright and powerful beam. 5 Interchangeable rotating gobos + clear and 1 interchangeable fixed gobo project through a 3 facet rotating prism. Master / slave and automatic music activated stand alone operation is also included with the additional feature that the scan angles and center points can also be pre-set.

360 TWO

Power Supply: AC 120/220V 60Hz.
Power Consumption: 280W
Lamp: MSD 200 or MSD 250W
Colors: 7 Dichroic filters, variable speed continuous wheel rotation.
Control: Rotation of Pan through 360° and Tilt through 270°
Dimensions: 12.8" x 12.8" x 20"
Weight: 35 lbs.



KLS TECHNOLOGY GROUP

MOVING HEADS



SC 980

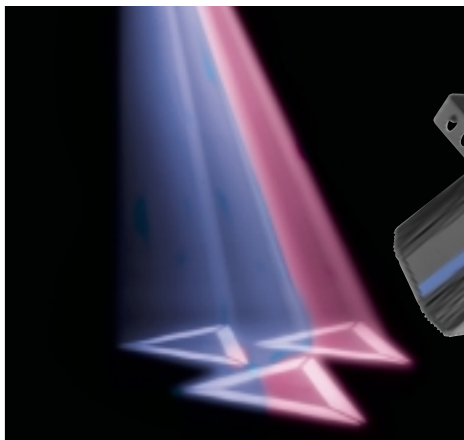
One of the most powerful scanners on the market today. Uses HMI 1200 lamp, 2 color wheels, UV, frost and 2 color correction filters, motorized focus, iris, 2 gobo wheels, 1 with 5 static gobos, 1 with 4 rotating gobos, zoom, 3 rotating prisms, super fast strobing, dimming, 16 bit resolution.

SC 980

Power Supply: 230V 50/60Hz.
Power Consumption: 1500W
Lamp: HMI 1200
Dimensions: 36" x 14" x 6"
Weight: 80 lbs.

ROULETTE 1200 LD

Now this a bang for your buck! This unit has 9 dichroic filters, variable speed, continuous color wheel rotation to create a rainbow effect, 2 color correction filters, 5 indexable rotating gobos + clear; 5 fixed gobos + clear; 1 - 3 facet rotating prism, fast action shutter, strobe and blackout, controlled via 8 channel DMX512 or automatic mode which allows groups of 4 units to operate in sequence or with internal programs.



ROULETTE 1200 LD

Power Supply: 230V 50/60Hz.
Power Consumption: 1900VA at 230V
Lamp: HMI 1200W
Control: 8 channel DMX 512
Dimensions: 36.2" x 18" x 11.2"
Weight: 85 lbs.



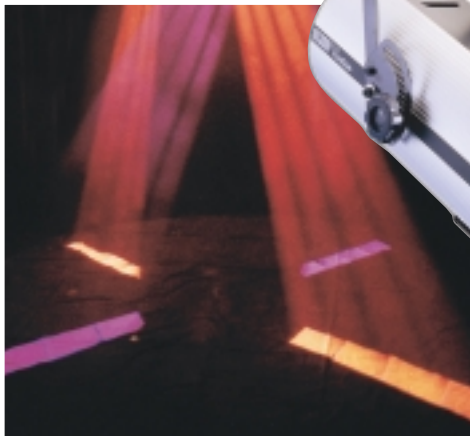
TORNADO

This innovative new scanner for the value is loaded with features! Gobos, colors, strobe, optional MSD 250 lamp, can be controlled with any DMX controller or Easy Pro DMX 512 Controller, lightweight, available in 5 colors: purple, yellow, blue, red, black, continuous operation.

TORNADO

Power Supply: 120/220V 50/60Hz.
Power Consumption: 300W
Lamp: EHJ 24V 250W **Optional MSD 250
Control: 4 channel DMX 512
Colors: 7 + white; Gobos: 5; Strobe
Dimensions: 20" x 9.5" x 8.5"
Weight: 18 lbs.

SPECIAL EFFECTS



KLS-SE 300 OR 300 DMX VORTEX

This advanced fixture creates blade style beams which slash through the air to the pulse of the music. Multicolored beams originating from pure dichroic colors and superior optics provide maximum output for a fabulous effect. Direct projection features sound-to-light motor link. Extruded aluminum housing is presented in silver and black, which resists normal scratching and maintains years of visual elegance. Continuous operation, fan cooled.

300 SERIES

Fuse: 10 amp. max.
Input Voltage: 120V 230V 50/60Hz.
Lamp: EVD 36V 400W (SE 300) or HTI 150W 2000 hrs.
(SE 300 DMX or SE 301)
Dimensions: 19" x 7.5" x 8.5"
Weight: 20 lbs.
SE 300 DMX: stepper motors, shutter; DMX programmable via KLS-LC2001 controller.

KLS-SE 301 OR 301 DMX GALAXY

This KLS effect creates a high power, wide angle spray of multicolored dichroic light beams that revolve to the beat of any music. Featuring sound activation via an internal microphone with adjustable sensitivity, pure dichroic filters for the richest possible colors, exceptional optics for maximum light output. The extruded aluminum housing with epoxy painted panels will provide long lasting service in any installation. Continuous operation, fan cooled.

301 SERIES

Fuse: 10 amp. max.
Input Voltage: 120V 230V 50/60Hz.
Lamp: EVD 36V 400W (SE 301) or HTI 150W 2000 hrs.
(SE 301 DMX or SE 301)
Dimensions: 19" x 8.5" x 8.5"
Weight: 20 lbs.
SE 301DMX: stepper motors, shutter; DMX programmable via KLS-LC2001 controller.



KLS-SE 302 OR 302 DMX COMET

As it whirls to the beat of the music, the COMET generates a cone of color, creating a very impressive inverted tornado effect. Comes in 8 different solid colors or as a multicolor effect. Highlights are: sound activation via an internal microphone with adjustable sensitivity; dichroic color filters; superior optics for maximum light output. Continuous operation, fan cooled.

302 SERIES

Fuse: 10 amp. max.
Input Voltage: 120V 230V 50/60Hz.
Lamp: EVD 36V 400W (SE 302) or HTI 150W 2000 hrs.
(SE 302 DMX or SE 302)
Dimensions: 19" x 8.5" x 8.5"
Weight: 20 lbs.
SE 302 DMX: stepper motors, shutter; DMX programmable via KLS-LC2001 controller.



KLS TECHNOLOGY GROUP

SPECIAL EFFECTS

KLS-SE 200 OR 200 DMX MOONSCAN

Dichroic filters, superior optics and maximum light output produce pure, rich multicolor beams. This unit is sound activated via an internal microphone. The highly reflective mirror produces imaging through our X, Y mirror head scan system. The extruded aluminum housing resists normal scratching and proves to keep its brilliant appearance for long lasting service. Continuous operation, fan cooled.

200 SERIES

Fuse: 10 amp. max.
Input Voltage: 120V 230V 50/60Hz.
Lamp: EVD 36V 400W (SE 200) or HTI 150W 2000 hrs.
(SE 200 DMX or SE 200)
Dimensions: 26" x 8.5" x 8.5"
Weight: 25 lbs.
SE 200 DMX: stepper motors, shutter; DMX programmable via KLS-LC2001 controller.



KLS-SE 201 OR 201 DMX CONESCAN

Keeps time with the music's beat. Maximum light output is achieved by using superior optic and dichroic filters. Sound-to-light transmission is realized through an internal microphone and transmits rapidly to the X, Y mirror head scan. Housing is extruded aluminum in a silver finish while all chassis components are black epoxy finish. Ten color variations: yellow, orange, red, magenta, purple, medium blue, blue, green, white or multicolored. Continuous operation, fan cooled.

201 SERIES

Fuse: 10 amp. max.
Input Voltage: 120V 230V 50/60Hz.
Lamp: EVD 36V 400W (SE 200) or HTI 150W 2000 hrs.
(SE 201 DMX or SE 201)
Dimensions: 26" x 8.5" x 8.5"
Weight: 25 lbs.
SE 201 DMX: stepper motors, shutter; DMX programmable via KLS-LC2001 controller.



KLS-SE 506 ATLAS

Seven vivid, brilliant beams of white light cut through the air to create a spectacular effect. This unit is great when used in multiples, or chased. Individual lenses can be gelled. Very sharp and powerful! Continuous operation, fan cooled.

506 SERIES

Fuse: 10 amp. max.
Input Voltage: 120V 220V
Lamp: DYS 120V 600W
Dimensions: 25" x 16" x 9"
Weight: 17 lbs.

D.J. SERIES



KLS-SE 100 MOONSCAN

A mirror head moves beams of light back and forth to the beat of the music via an internal microphone. Includes automatic on-board sound sensitivity adjustment, 3 different modes of operation, dichroic color filters. Small, light compact housing is perfect for the mobile DJ. Fan cooled, continuous operation.

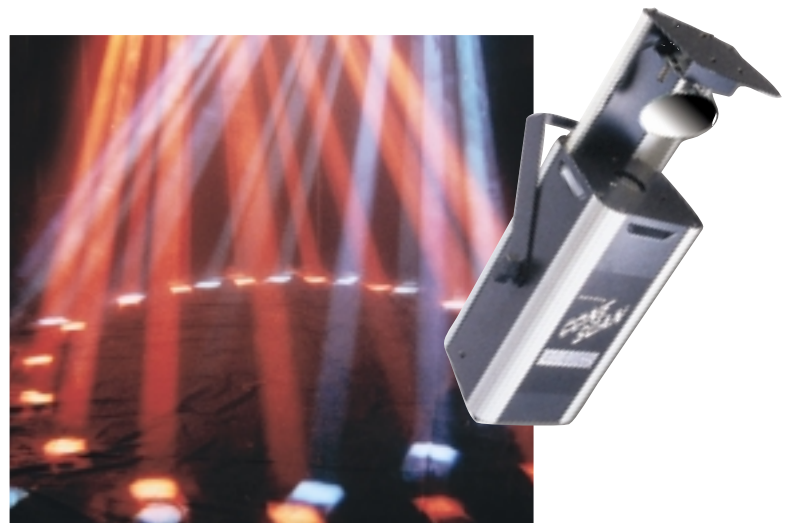
KLS-SE 100

Fuse: 5 amp. max.
Input Voltage: 120V 230V 50/60Hz.
Lamp: FCS 24V 150W
Dimensions: 19" x 6" x 6"
Weight: 8 lbs.

KLS-SE 101 CONESCAN

A smaller version of the Digi Pro Series model. This unit produces a superb cone of brilliant color that scans back and forth to the beat of the music via an internal microphone. The truly ultimate moving tunnel effect. Featuring dichroic color filters, 8 different solid colors or multicolored, superior optics for maximum light output, on-board automatic sound sensitivity adjustment, 3 different modes of operation. Compact design perfect for mobile DJ's. Fan cooled, continuous operation.

For specifications see SE100 MOONSCAN



KLS-102 GALAXY

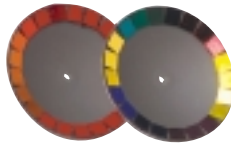
This unit produces a high power, wide angle spray or multicolored light beams that revolve back and forth to the beat of the music via the internal microphone. Features are: on-board automatic sound sensitivity adjustment; pure dichroic filters for the richest colors; superior optics for maximum light output; two different modes of operation; compact design for mobile DJ use; fan cooled, continuous operation.

KLS-102

Fuse: 5 amp. max.
Input Voltage: 120V 230V 50/60Hz.
Lamp: FCS 24V 150W
Dimensions: 12" x 5.625" x 5.625"
Weight: 5 lbs.



KLS TECHNOLOGY GROUP



KLS-103 COMET

The Comet produces a conical array of color that spins around to the beat of the music creating a very impressive tunnel effect. Featuring: on-board automatic sound sensitivity; dichroic color filters; superior optics for maximum light output; two different modes of operation; compact design perfect for mobile DJ's; comes in different solid colors or multicolored; fan cooled, continuous operation.

KLS-103

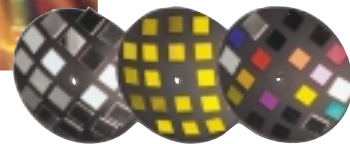
Fuse: 5 amp. max.
Input Voltage: 120V 230V 50/60Hz.
Lamp: FCS 24V 150W
Dimensions: 12" x 5.625" x 5.625"
Weight: 5 lbs.

KLS-SE 104 SCATTERSPOT & KLS-SE 105 SCATTERSPOT

A brilliant effect creating multiple beams of sharp white light. A great substitution for the pinspot. Looks great when used in multiples. Can be chased. Comes in standard white, but is also available in yellow, orange, red, magenta, purple, medium blue, blue, green or multicolored. Continuous operation. The SE 105 has the extra feature of rotating beams. Please specify color when ordering.

KLS-SE 104 KLS-SE 105

Fuse: 2 amp. max.
Input Voltage: 120V 230V 50/60Hz.
Lamp: BRL 12V 50W
Dimensions: 8" x 5" x 5"
Weight: 8 lbs.

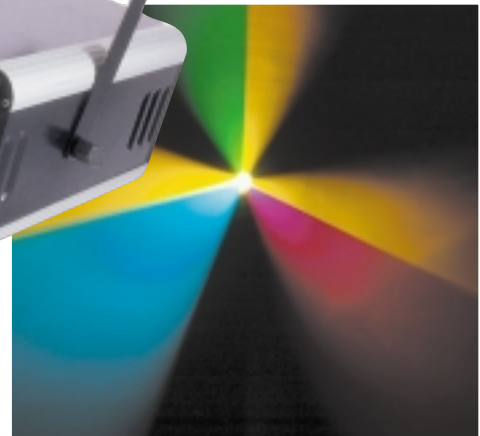


KLS-SE 111 BLADERUNNER

The Bladerunner is an innovative effect which is remarkably light and compact, yet very powerful. It projects a multitude of flat beams and brilliant colors which change direction, color and shape via sound activation. Ideal for DJ's, yet powerful enough for nightclubs! Fan cooled, continuous operation.

KLS-SE 111

Fuse: 5 amp. max.
Input Voltage: 120V 230V 50/60Hz.
Lamp: EWW 82V 250W
Dimensions: 12" x 6.5" x 6.5"
Weight: 8 lbs.



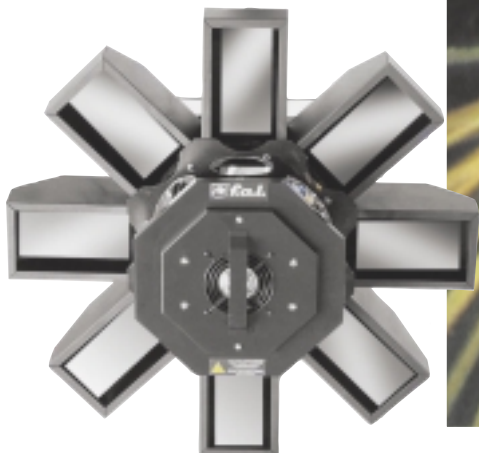
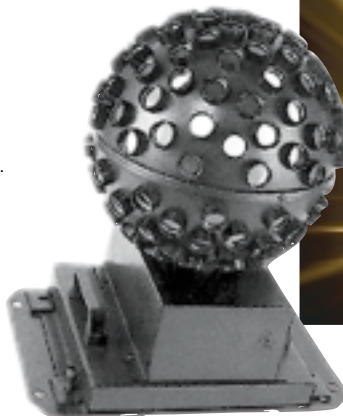
CENTERPIECES

KLS-SE 401 SUNRISE

Vivid beams of focused white light project from a slow, rotating sphere. The 21st century's mirror ball effect. Includes mounting plate. Ideal for use in a large venue as an inexpensive centerpiece, continuous operation.

KLS-SE 401

Fuse: 6 amp. max.
Input Voltage: 120V 230V 50/60Hz.
Lamp: HTI 150W 2000 Hrs. or 64514 120V/300W
Weight: 24 lbs.



OCTOPUS

A powerful and spectacular centerpiece projector. Can be used in any position. Uses an HMI 575 metal halide lamp. 0 - 10V analog control.

OCTOPUS

Power Supply: 230V 50/60Hz.
Power Consumption: 800W
Lamp HMI 575

DOMINATOR

Great centerpiece! 6 arms with moving mirrors, additional cylinders for an impressive effect, 6 multi-scanners, 3 fold prism effect, 6 different gobos, 3 dichroic colors, blackout, programmable via DMX512, uses 12 channels of DMX.



DOMINATOR

Power Supply: 230V 50/60Hz.
Power Consumption: 3000W
Lamp: HMI 1200
Weight: 80 lbs.
Dimensions: 36" x 36" x 18"



KLS TECHNOLOGY GROUP



STARLIGHT

HMI 1200 lamp, DMX control, 7 dichroic colors, rainbow effect with variable speed, motorized iris, mechanical dimmer, strobe, frost & zoom. Dedicated DMX control system located on the back of the unit, or can be operated via remote DMX 512 signal. Fan cooled, continuous operation.

SCALA 1200

Power Supply: 230V 60Hz.
Lamp: HMI 1200/GS
Control: DMX 512
Dimensions: 24.8" x 12.8" x 16.8"
Weight: 21 lbs.

SCALA 1200

SCALA 1200

Power Supply: 230V 60Hz.
Lamp: HMI 1200W
Dimensions: 46.8" x 11.2" x 10.8"
Weight: 55 lbs.
Forced Air Cooling
Continuous Operation



FOLLOWSPOT 1000E

FOLLOWSPOT 1000E

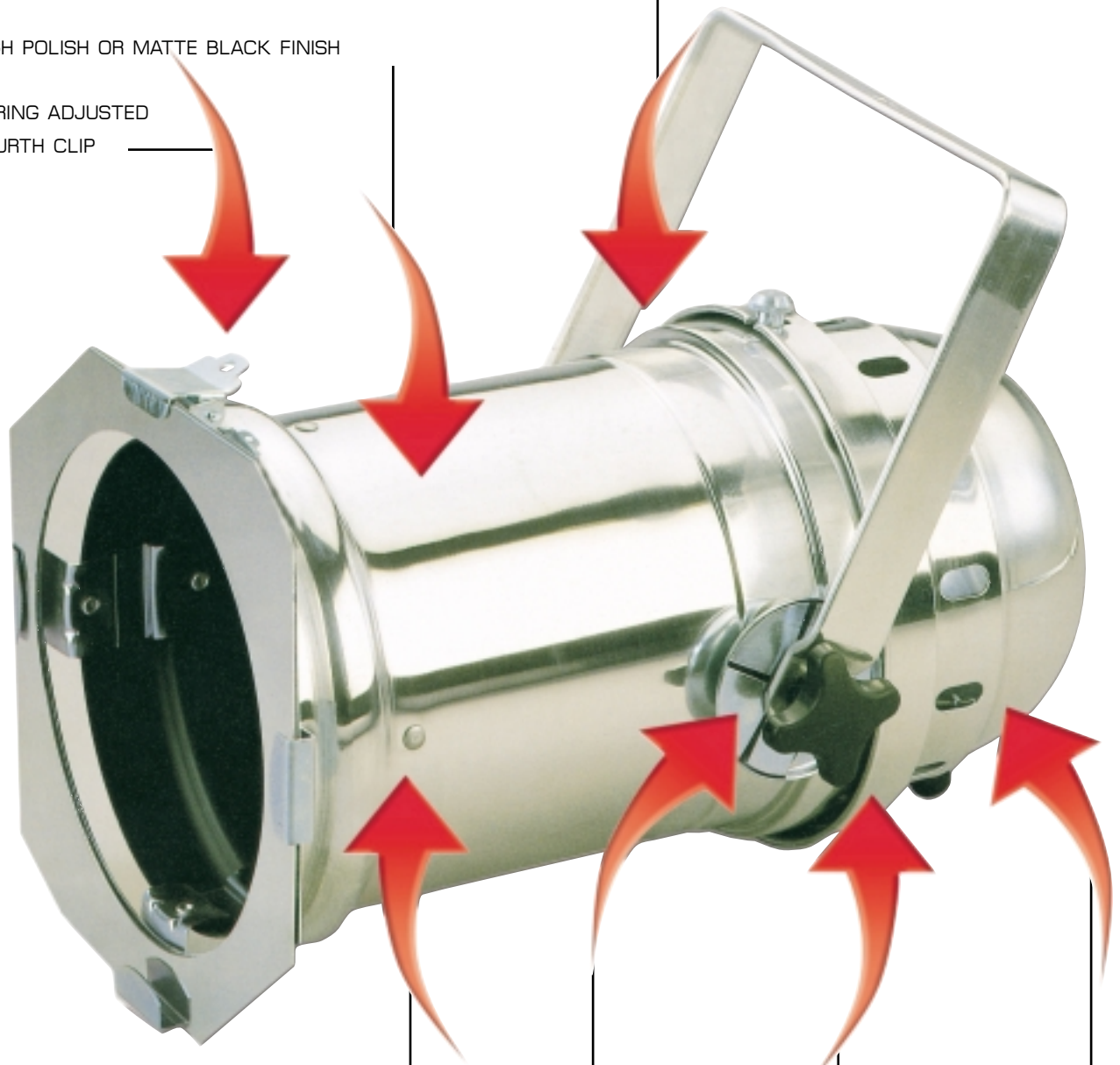
Power Supply: 120V 60Hz.
Lamp: 750 or 1000W Halogen
Dimensions: 33.5" x 13.48" x 17.6"
Weight: 33 lbs.
Continuous Operation



REINFORCED STRESS POINTS

HIGH POLISH OR MATTE BLACK FINISH

SPRING ADJUSTED
FOURTH CLIP



HIGH GRADE RIVETS

CLUTCH MECHANISM

20% THICKER ALUMINUM FOR ADDED STRENGTH

CAP ATTACHED TO BODY VIA SAFETY CABLE

POLISHED & BLACK

Par 36,46,56,63

PINSPOTS

Par 36 Polished & Black with Gel Frame

SHORT POLISHED/BLACK

Par 56



KLS TECHNOLOGY GROUP

PARCANS & PINSPOTS

High quality professional aluminum par cans with extra thick aluminum for extra strength. Clutch, four spring clip, gel frame and prewired. Ready to be installed.

* Available in polished or black. Also available: high quality aluminum spun reflectors with mogul ceramic socket.



PAR 16*



PAR 46



PAR 20*

Comes with E26 socket.



PAR 56*



PAR 30*

Comes with E26 socket.



PAR 56*
SHORT



PAR 36



PAR 64*



PAR 38*



R-56

R-64

R-46

PARCANS & PINSPOTS



KLS-P707 PIN SPOTS

Spun aluminum construction comes with gel frame, holding clip, 40VA transformer which makes it ideal for use with A111 Halostar lamps. Fused, prong cord. Comes in polished or black.



KLS-P702 PAR 36/ P703 PAR 46 PIN SPOTS

Great value! Metal construction, comes with a screw cap, two prong cable, no fuse. Available in black.



KLS-P736 GEL CAPS

High temperature, color plastic filters to be used with Par 36 Pin Spot. Comes in red, blue, green, yellow, amber, magenta, aqua and purple.



LAMPS

PHILIPS - OSRAM - USHIO - GE



KLS TECHNOLOGY GROUP

STROBES

KLS MONSTER 1500 WATT COLOR STROBE

Very bright 3 colors, yellow, blue, red + white. Compatible with any DMX512 system. Power: 120V / 50/60Hz 15Amp/ 1500W /Dimmable. Automatic without controller. Requires 3-DMX 512 channels to control intensity, speed and color. Addressing by Dip switch. Toroidal transformer and fan cooled.



KLS DMX 1500

Power Consumption: 1500W / 15A
Lamp: XOP15
Weight: 20 lbs.
Dimensions: 26" x 6" x 10"



ST 750W

Super powerful, the ideal strobe for large venues, powerful, bright and reliable. 0 -10V analog.

Power Supply: 120V



ANYTRONICS SUPERSTAR STROBE MK II

The Anytronics Superstar Strobe Mk II is probably the most versatile high powered strobe on the market today. It is housed in a steel enclosure complete with swivel stand/hanging bracket. The strobe uses a circuit which overcomes the problem of current surge at switch on. The circuit incorporates its own internal oscillator with speed adjustment from 1 - 12.5FPS, and fully isolated external inputs via 2 jack sockets.

Power Supply: 120V

ANYTRONICS MEGASTAR STROBE MK II

The Anytronics Megastar Strobe Mk II is probably the most versatile linear tube strobe on the market today. It is housed in a steel enclosure complete with hanging bracket. The strobe uses a 1500W linear tube together with a mirror finished aluminum reflector for maximum light output. Unlike some other strobes on the market, the Megastar Strobe is very quiet when it fires making it ideal for use in theatre or studio environments where background noise needs to be kept to a minimum.

Power Supply: 220V



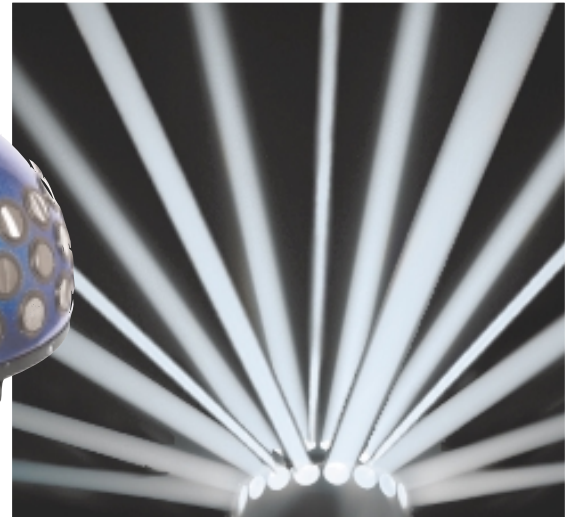
OUTDOOR LIGHTING

MEDUSA

Outdoor projector giving out 50 beams all rotating at a constant 360° speed rotation of the body, extruded aluminum, steel plate body and fibreglass, waterproof, epoxy paint finish, easy access to lamp.

MEDUSA

Power Supply: 230V 50/60Hz.
Power Consumption: 3500VA at 230V
Lamp: HMI 2500 metal halide discharge lamp
Motors: 1 dc motor

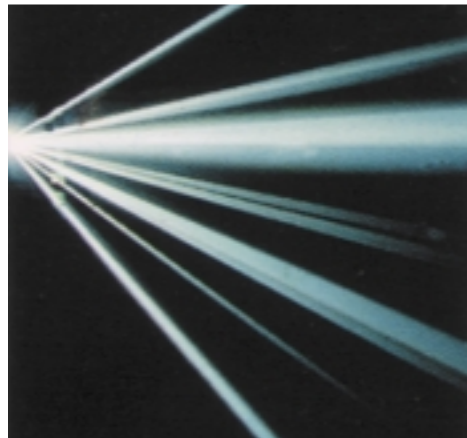


NIGHTCOLOR

24° to 40° zoom and an ellipsoidal cold-light reflector; 2 color wheels producing 56 color combinations and a frost filter; custom gobos, manual iris and four blade beam shapers, has shutter and strobe, extruded aluminum and galvanized metal housing, epoxy paint finish.

NIGHTCOLOR

Power Supply: 230V 50Hz.
Power Consumption: 1900VA at 230V
Lamp: MSR 1200 or HSR 1200
Control: DMX512 standard digital 2 channel
Colors: 2 wheels with a total of 13 dichroic filters.
Motors: 2 microstepping stepper motors



COMET 2500

Powerful outdoor projector uses an HMI 2500 lamp. Projects 3 different beam patterns, making this a very versatile effect. Programmable via 4 channel analog incorporating scan speed, scan angle, reflector speed, direction and shutter.

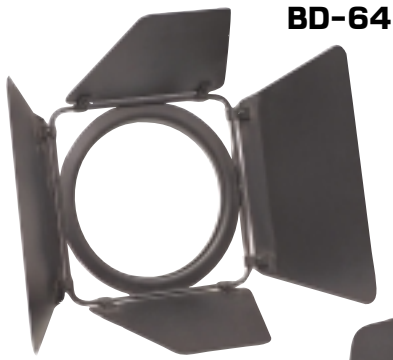
COMET 2500

Power Supply: 230V 50/60Hz.
Power Consumption: 3500W
Lamp: HMI 2500
Weight: 110 lbs.



KLS TECHNOLOGY GROUP

MISCELLANEOUS



BD-64

BARNDOORS

Made specifically for Par 56 and 64 Par Cans. They fit in the same holding clips in which the gel frames fit. Rotates 360° around for perfect beam adjustment.



BD-56

“C” CLAMPS

C-60: An inexpensive clamp.

C-62: Heavy duty metal cast “C” Clamp (used for 1” or 2” trussing or pipe), for those special applications where a regular clamp is not enough.



C-60



C-62

The “O” CLAMP

C-61 1”, C-63 2”:

Heavy duty plastic “O” Clamp (used for 1” or 2” trussing or pipe), for those special applications where a regular clamp just won’t do.



SC-1

SAFETY CABLES

18” safety cable with quick snap used to secure fixtures to trussing, stands etc.

CONTROL SYSTEMS

KLS-LC 2001 DMX 512-80 CONTROLLER

This powerful controller features 80 channels (USITT) standard DMX along with 200 programmable scenes! Full manual override of any fixture while programs run, 50 programmable chases with 99 steps, "GO" button for scene control in theatrical settings, pre-programmed scenes, 10 pre-programmed chases, modify crossfade attributes to any fixture channel, "HELP" button for operating assistance, one button "ON THE FLY" selection of any scene or chase, "PILE ON" chases or scenes to run simultaneously, full sound to light triggering of chases, optional 8 channel 0-10 volt analog output, and a library of defined features! 2 rack space 50' DMX cable included.



512-80 CONTROLLER

Input Voltage: 9VDC
Dimensions: 15.5" x 13.25" x 7.25"
Weight: 6 lbs.

LPD240

4 channel analog dimmer pack. 10 amps per channel, individually fused, 2 AC plugs per channel.



LSP240

4 channel analog relay pack. 10 amps per channel, individually fused, 2 AC plugs per channel.



KLS-LC 2012/2012 DMX SOLID STATE RELAY

A 12 channel solid state relay that is prewired, fused, has terminal blocks and controlled with 0-10V or DMX 512. The perfect time saver for permanent installation.

KLS-LC 2012/2012

Input Voltage: 120V 230V 60/60Hz.
Dimensions: 15.5" x 13.25" x 7.25"
Weight: 6 lbs.



EASY CONTROLLER



LC403

Sound activated chase controller with 4 Edison sockets, great for pinspots and parcans. Internal microphone, sensitivity and speed adjustable. 0 crossing circuit.



LC240FS

LC240

4 channel, 10 amps per channel audio chaser. Channel individually fused, 16 chase patterns, blackout function which makes this unit ideal for chasing pinspots and parcans. Optional foot switch (LC240FS) for the blackout function.



SP12

19" x 1U rack mount format. Full status indication. Screw terminal connectors. DIN socket connectors. Flashing LED's in standby mode.



KLS TECHNOLOGY GROUP

CONTROL SYSTEMS

ANYTRONICS D1225 PROFESSIONAL DIMMER PACK

Extremely reliable, following features fitted as standard: circuit breaker protection for all channels, on board rotary local controls, 0V to 10V analog input, DMX 512 input, load present/good indicators, monitor LED's, panel mounted electronics' fuse holder.



ANYTRONICS LIGHT SYSTEM 1 & LIGHT SYSTEM 2

Light System One: easy to use, 48 chase sequences, full 4 channel sound to light, single channel strobe output, 19" x 2U size, low voltage outputs and optional built in 4 x 5A switch pack

Light System Two: Features as Light System One Plus 2 "Zone" outputs, 8 switched outputs, "Auto Toggle" facility



ANYTRONICS DP410 DIMMER PACK

Made for professional use, 10 amps per channel, analog or DMX control, 2 year warranty



ANYTRONICS 8 CHANNEL STROBE CHASER

The Anytronics 8 Channel Strobe Chaser is an economic and easy to operate strobe controller for use with any strobe requiring a +10V pulse. It has two sequences, a 1 - 8 chase and an all flash, and these can be driven by either the internal clock pulse or by the bass beat of the music.



ANYTRONICS ESC EXTENSION SPEED CONTROL

The Anytronics ESC Extension Speed Control is a powerless remote speed control, which can be used with Superstar Strobe Mk II, Megastar Strobe and Deathstar Strobe. The unit consists of a rotary speed control, "on/off" push button switch and momentary action flash button, which when pressed once will give a single flash.



FOGGERS & HAZERS

CX100 MINI FOGGER

700 watt heater, great output, 1 litre tank, hanging bracket, optional timer or wire remote, 3000 cubic feet per minute output. Great for DJ's or small venue applications.

CX100

Watts: 700
Smoke Output: 3000 CPM
Weight: 11lbs.
Input Voltage: 120V
Fuse: 10 amps.
Control System: proprietary remote control

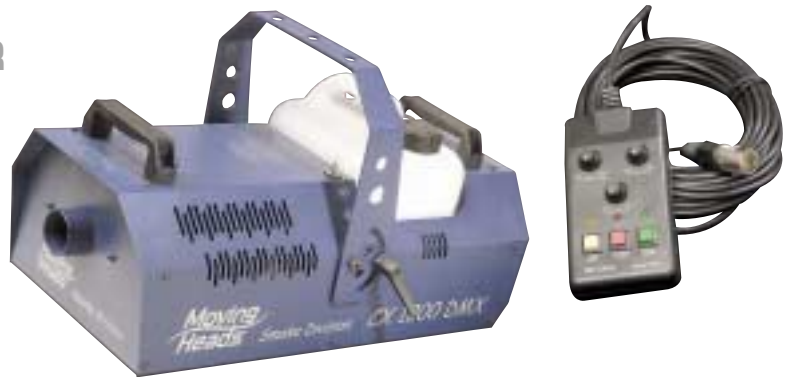


CX1200 DMX FOGGER

1300 watt heater for continuous operation, 25,000 cubic feet per minute output, timer remote control, hanging bracket, 2 carrying handles, 1 gallon tank, DMX 512 controllable.

CX1200

Watts: 1300
Smoke Output: 25,000 CPM
Weight: 22lbs.
Input Voltage: 120V
Fuse: 15 amps.
Control System: DMX



KLS-FM 1000 LONDON FOGGER

The FM 1000 London Fogger has a 1000W heater with a 21,000 CPM smoke output! Other features are: small compact size, low voltage remote control, 1/2 gallon internal fluid tank and power on/off from remote.



COMET 2500

Watts: 1000
Smoke Output: 21,000 CPM
Dimensions: 16" x 8" x 6"
Weight: 15 lbs.
Input Voltage: 120V 230V
Fuse: 10 amp.



KLS TECHNOLOGY GROUP

FOGGERS & HAZERS



HX 100

Creates an instant mist. No warm up time, heatless, 30 FT. remote control, haze duration and interval control. Tank capacity 2.5 liter* output: 1000 cubic feet per minute.

HX 100

Dim: 19" x 9 3/4"
Weight: 27lbs.
Uses haze oil base liquid only



HX 300

Continuous fog output, electronic thermo sensing-750W heater; 2500 cu.ft. per minute output, 10ft. cable with controller-1 Quart container; hanging bracket - evenly distributes fog in a room.

HX 300

Warm up time: 4 minutes
Dim: 19" x 9 3/4"
Weight: 19lbs.



**KLS F29 or
KLS F29 1/2 gal. Fog Fluid
KLS F31 Haze Fluid**

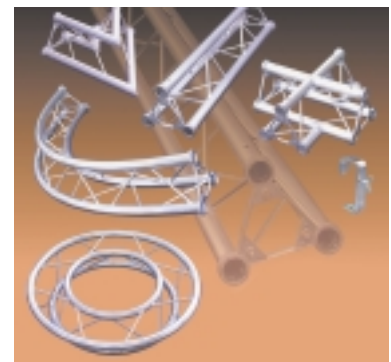
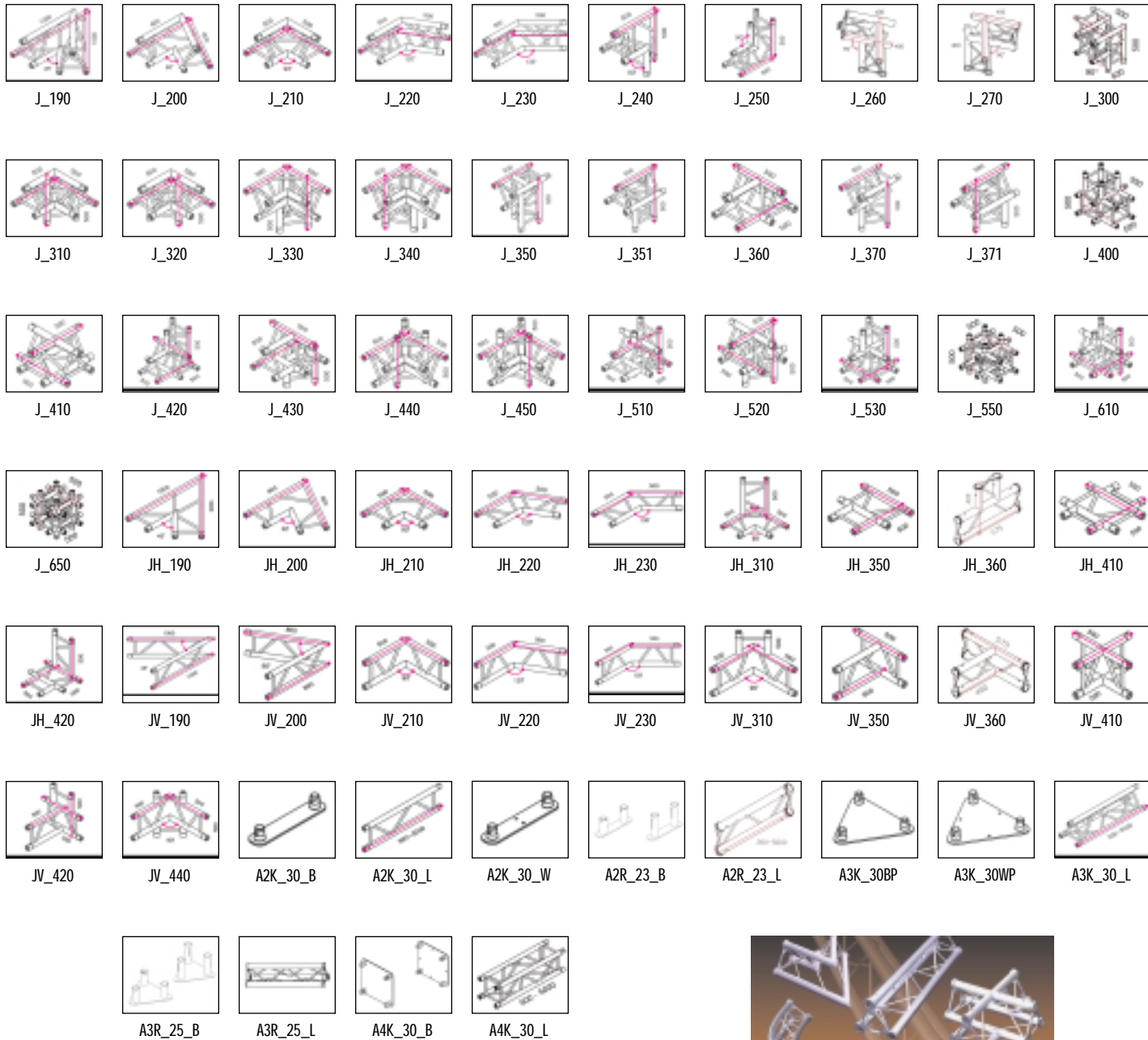


**KLS F28 FOG
SCENTS**

NOVATRUSS SYSTEMS

NOVATRUSS I TRUSS & NOVATRUSS TRI TRUSS

Flexible with a vast range of standard components that allow you to create custom designs. Lightweight allows for quick set up time. Constant quality control through manufacturing procedures. A great value for the money!



SUPPORT SYSTEMS

ELEVATOR

Extends from 1' to 10'. #LS 1703 can carry up to 160 lbs. Comes with assembly plate, up/down remote and ribbon power cable. Ribbon cable has 5 circuits available.

ELEVATOR

Input Voltage: 220V
Dimensions: 10" x 13" x 24"
Weight: 80 lbs.



LSK 3363

Stand extends to 12' including bars. Maximum weight 100 lbs. evenly distributed. Includes 1 T bar and 2 side bars. 8 hanging points.



LSK 3772

Low cost black tripod ideal for par cans and pinspots. Extends to 9'. Maximum weight 40 lbs. evenly distributed. Includes 1 T bar.



LS 3101

Portable trussing system. Easy set up, stable. Includes 2 black aluminum tripods which extend to 9', 2 5' high trusses and 2 T bars. Total weight capacity is 200 lbs. evenly distributed.



LSWP 1685

Crank-up stand same as LSK 3663. Total weight capacity 120 lbs. evenly distributed. Includes T bar and 2 side arms, extends to 10'.



LS 1683

Black aluminum crank-up tripod with a single T bar. Extends to 10'. Supports 100 lbs. evenly distributed. 4 hanging points.



LS 3101 WP

Same as LS3101 except this stand is a crank-up.



KLS TECHNOLOGY GROUP

27587 Schoolcraft Rd. Livonia, MI, USA 48150
Phone: 734.425.6620 Fax: 734.425.2103
www.kls-usa.com kls@mi-web.com